

**17L
4313**

Nissan NP300 Navara D23, Md. 2016

EU-pedestrian protection bar 60 mm high with cross pipe 42 mm

EU-Personenschutzbügel 60 mm hoch mit Querrohr 42 mm

Protection avant, homologuée CEE, 60 mm, traverse 42 mm



* Compatible with Automatic Cruise Control /Forward Collision Mitigation
Kompatibel mit Abstandsregeltempomat /Auffahrvermeidungs-oder wamsystem
compatible avec radar de régulation de distance/ freinage autonome d'urgence



ASSEMBLY INSTRUCTION

Montageanleitung • Instructions de montage



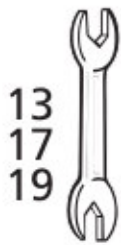
50 Minuten

Artikel-Nr:
17L4313 stainless steel
17L5313 black steel

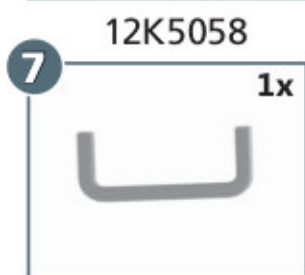
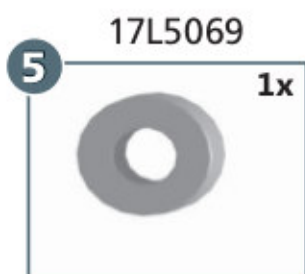
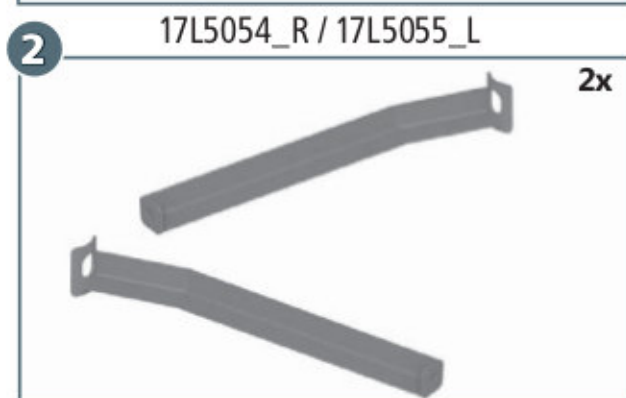
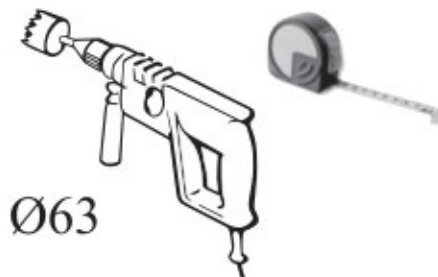
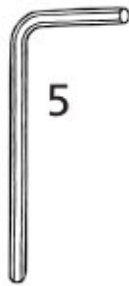
Revision 2: 18.05.2016



ULLSTEIN
CONCEPTS
GMBH

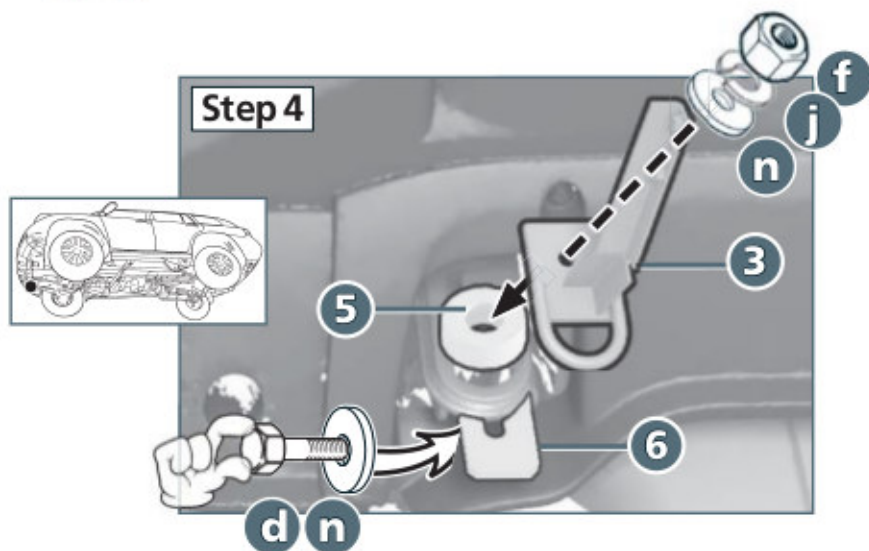
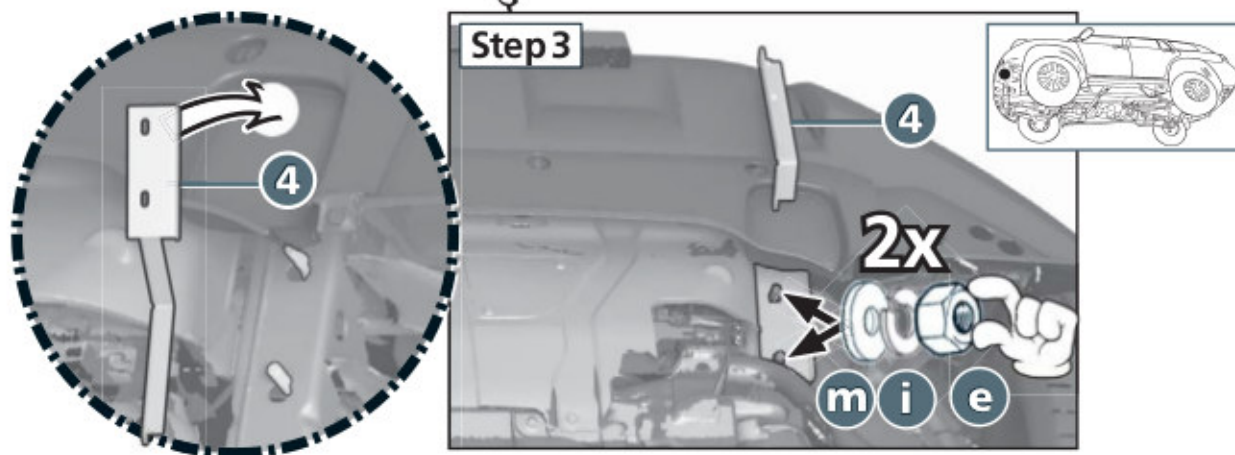
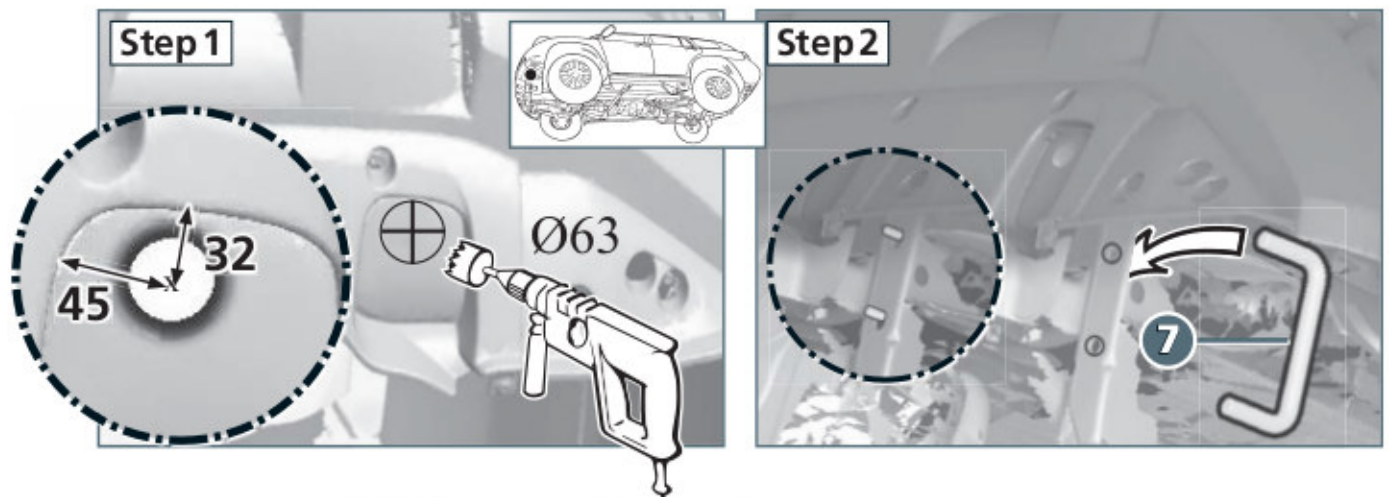


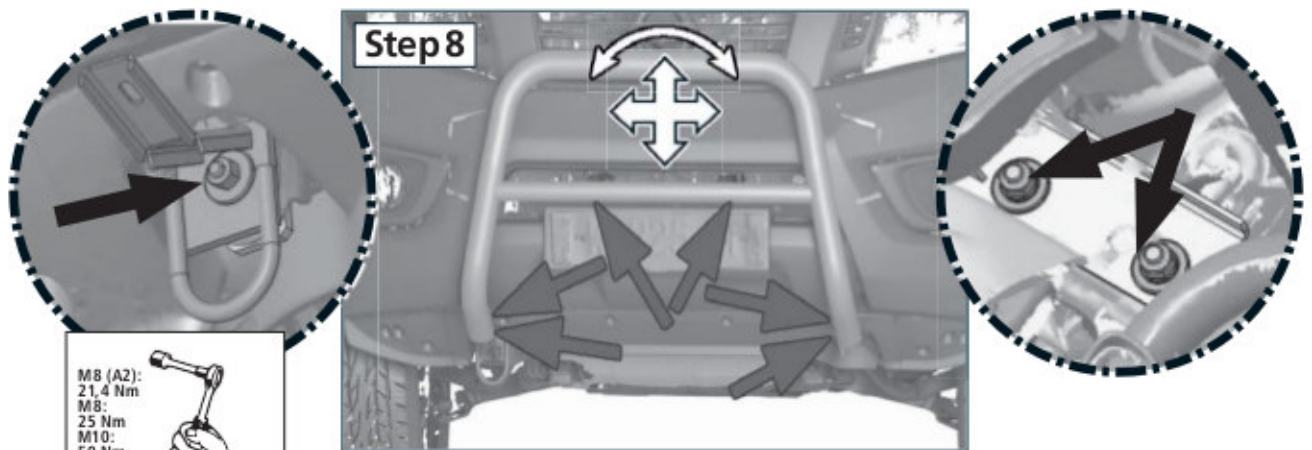
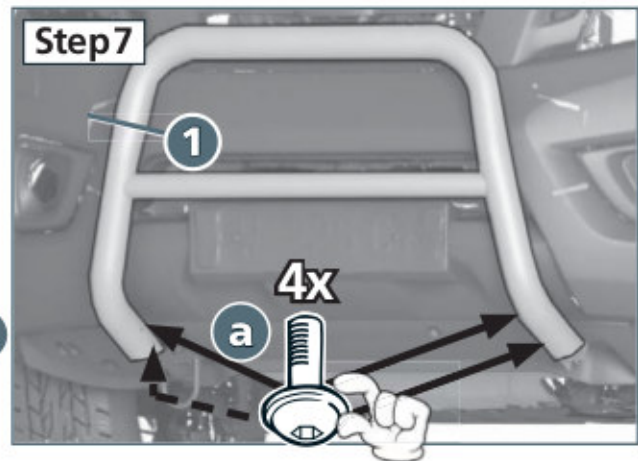
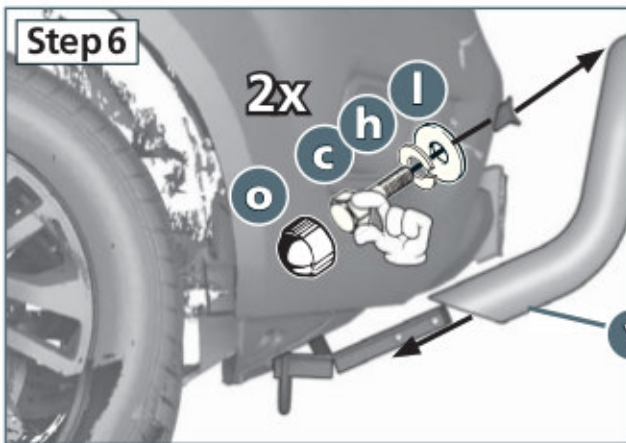
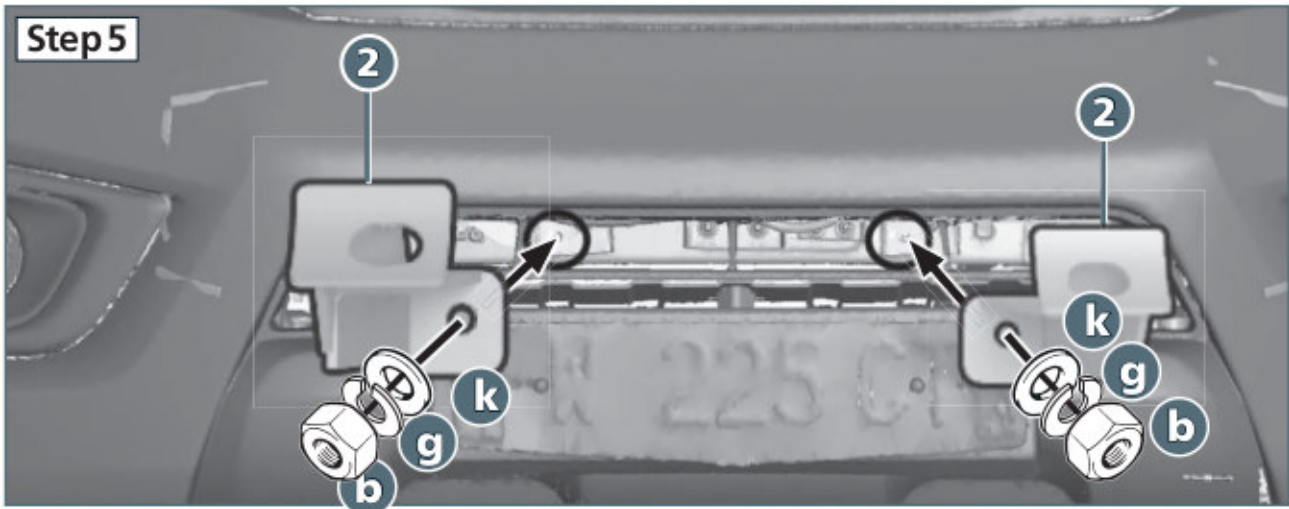
M8 (A2):
21,4 Nm
M8:
25 Nm
M10:
50 Nm
M12:
87 Nm



| | | | |
|----------|--|--------------------------|-----------|
| a | | M8x20; ähnl. ISO 7380 A2 | 4x |
| b | | M8; DIN 934 Zn | 2x |
| c | | M8x25; DIN 933 A2 | 2x |
| d | | M12x55; DIN 933 Zn | 1x |
| e | | M10; DIN 934 Zn | 2x |
| f | | M12; DIN 934 Zn | 1x |
| g | | Ø 8; DIN 127 Zn | 2x |
| h | | Ø 8; DIN 127 A2 | 2x |
| i | | Ø 10; DIN 127 Zn | 2x |
| j | | Ø 12; DIN 127 Zn | 1x |
| k | | Ø 8,4; DIN 125 Zn | 2x |
| l | | Ø 8,4; DIN 9021 A2 | 2x |
| m | | Ø 10,5; DIN 9021 Zn | 2x |
| n | | Ø 13; DIN 9021 Zn | 2x |
| o | | SW13 | 2x |







M8 (A2):
 21,4 Nm
 M8:
 25 Nm
 M10:
 50 Nm
 M12:
 87 Nm



**ULLSTEIN
CONCEPTS
GMBH**