

IMPROVING THE BAKFLIP[®] MX4

Refined by experience, perfected for the future

We are thrilled to share some exciting news about our flagship product, the MX4. As a valued partner, your success is our priority, and we continually strive to provide you with the best products in the market. Today, we are pleased to announce several improvements

that have been made to MX4 GEN 2 version of the MX4 as well as preview additional features that will be added in the months to come. These enhancements are designed to elevate the user experience and reinforce the MX4's position as a market leader.



MX4 GEN 2

- Reengineered framing on foam protected panels increase weather protection.
- Improved A-panel retainer clamp assembly reduces potential for dimpling when installing, improves the strength of the panel and boasts an uninterrupted design.
- The newly refined latch system features a crimp-free design that reduces cable fatigue for added durability and a longer service life.
- Updated prop rod clips function seamlessly with the new rails to offer a 45% stronger assembly.



New and Upcoming Updates

Improved Side Seal^A

Constructed from TPV, a polypropylene and EPDM rubber hybrid, to provide a smoother, more consistent fit and improved durability. **Effective June 2024.**

Additional Rail Clamps^B

For select longer bed applications, additional clamps reduce rail deflection for greater stability and optimal performance. **Effective July 2024.**

Optimized Cover Length^C

An additional 3/8" of length allows for dimensional variations in the bed to ensure a more precise fit and easier installation. **Effective June 2024.**

New Rear End Caps^D

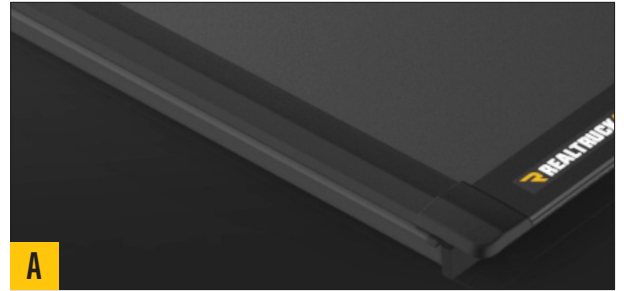
Molded rear end caps are integrated into the side seal to create a sleeker appearance, eliminate alignment and breakage issues and provide a seamless seal system for superior protection against the elements. **Estimated implementation Q2 2025.**

New Front Corner Caps^E

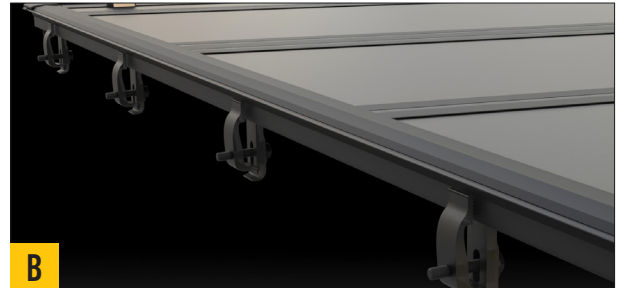
An improved cap design that offers a more refined appearance and superior weather protection at the front of the bed. **Estimated implementation Q1 2025.**

Enhanced Side Rail Profile^F

Engineered to add structural integrity for easier installation and a best-in-class rail design that's 30% stronger than previous versions. **Estimated implementation Q1 2025.**



A



B



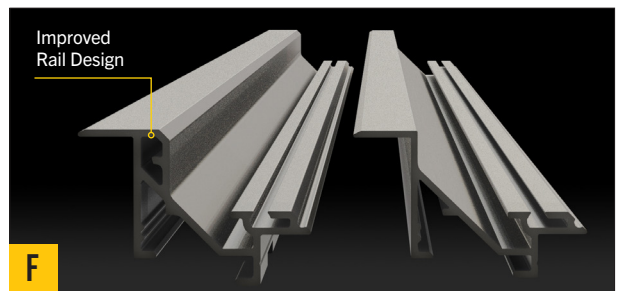
C



D



E



F

Left: New side Rail Right: Current Side Rail